



Ballasts for sodium Vapour 210 W Lamps with shape (76\*59) mm

Protection Class: I

Maximum winding temperature ( $t_w$ ): 130 °C

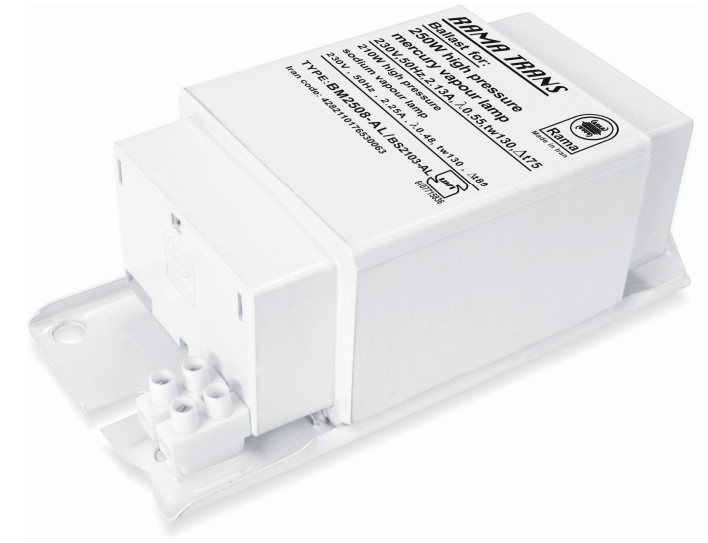
According to:

IEC61347-1, IEC61347-2-9, IEC60923

ISIRI7644-1, ISIRI7644-2-9, ISIRI5190

The winding of BM2508/BS2103-AL ballast is made of aluminium enamelled wire.

Also suitable for 250W mercury Vapour lamp.



Ballast									Lamp		Capacitor
Type	Voltage (V)/(Hz)	$\Delta t$ (°C)	Power Factor $\lambda$	Ballast Efficiency $\eta$	Dimensions			Weight (Kg)	Output (W)	Current (A)	$C_p$ ( $\mu f$ )
					a (mm)	b (mm)	c (mm)				
BM2508/BS2103-AL	230/50	80	0.48	87	172	148	80	2.46	210	2.25	25

